

A survey for *Sirex noctilio* and native wood wasps in Alabama

Andrea Cole¹, Lori Eckhardt¹, Andrew Liebhold²,
Bernard Slippers³

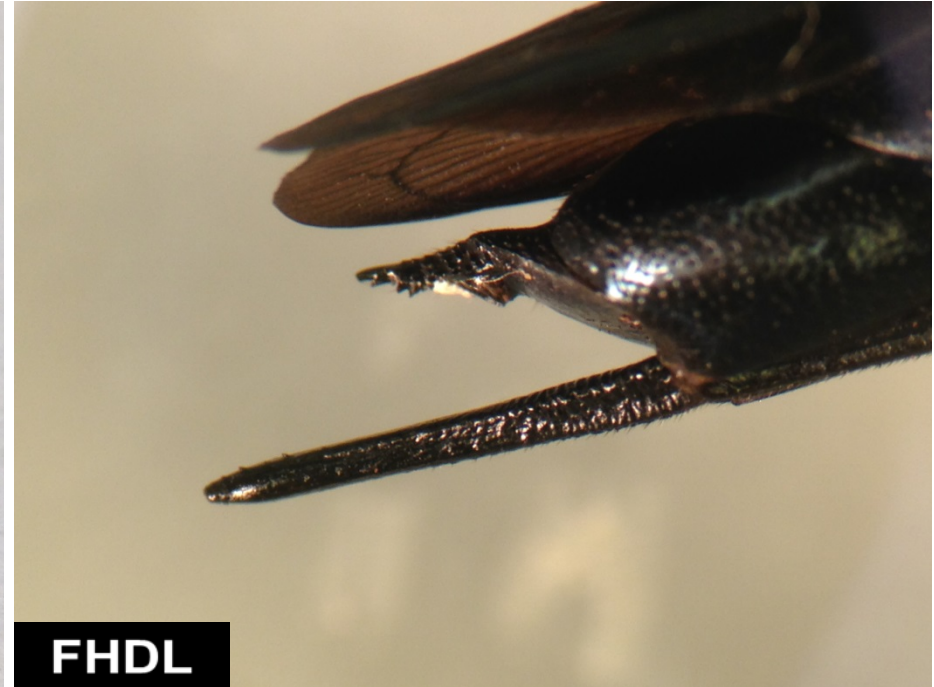
¹ Forest Health Dynamics Laboratory, School of Forestry and Wildlife Sciences, Auburn University, Auburn, Alabama, USA ²USDA Forest Service ³Forestry and Agricultural Biotechnology Institute, University of Pretoria, South Africa

Forest Health Dynamics Laboratory

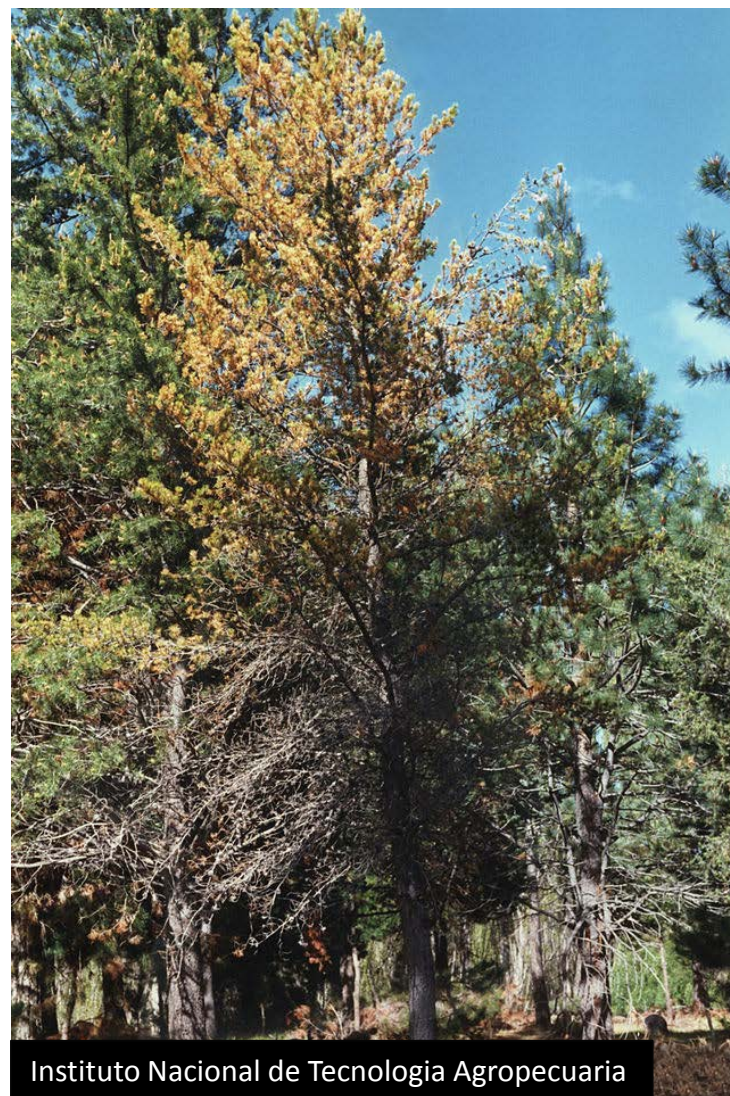
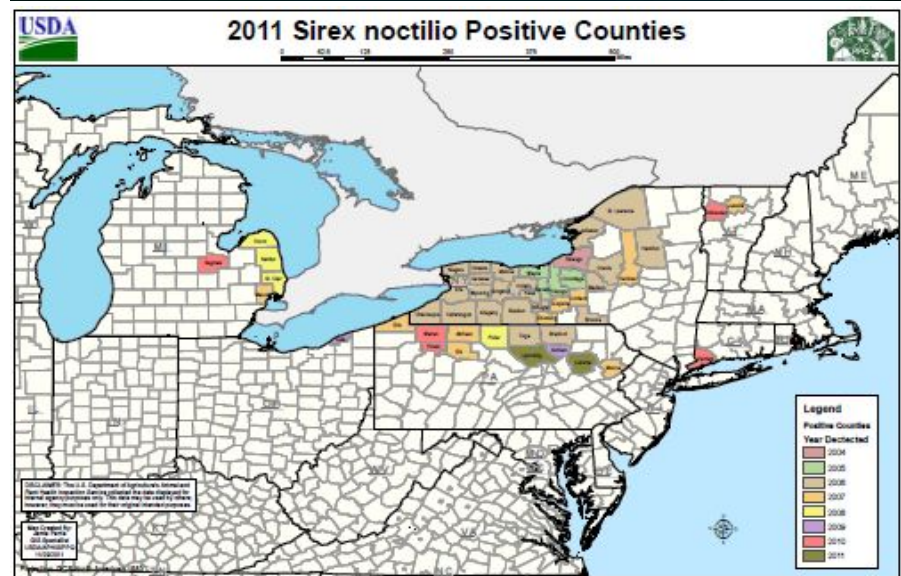
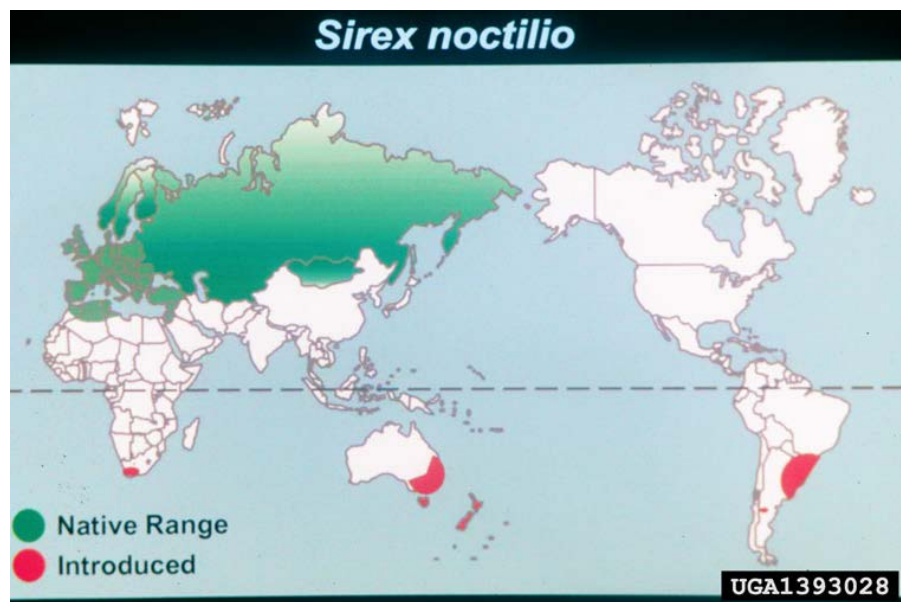
School of Forestry and Wildlife Sciences, Auburn University



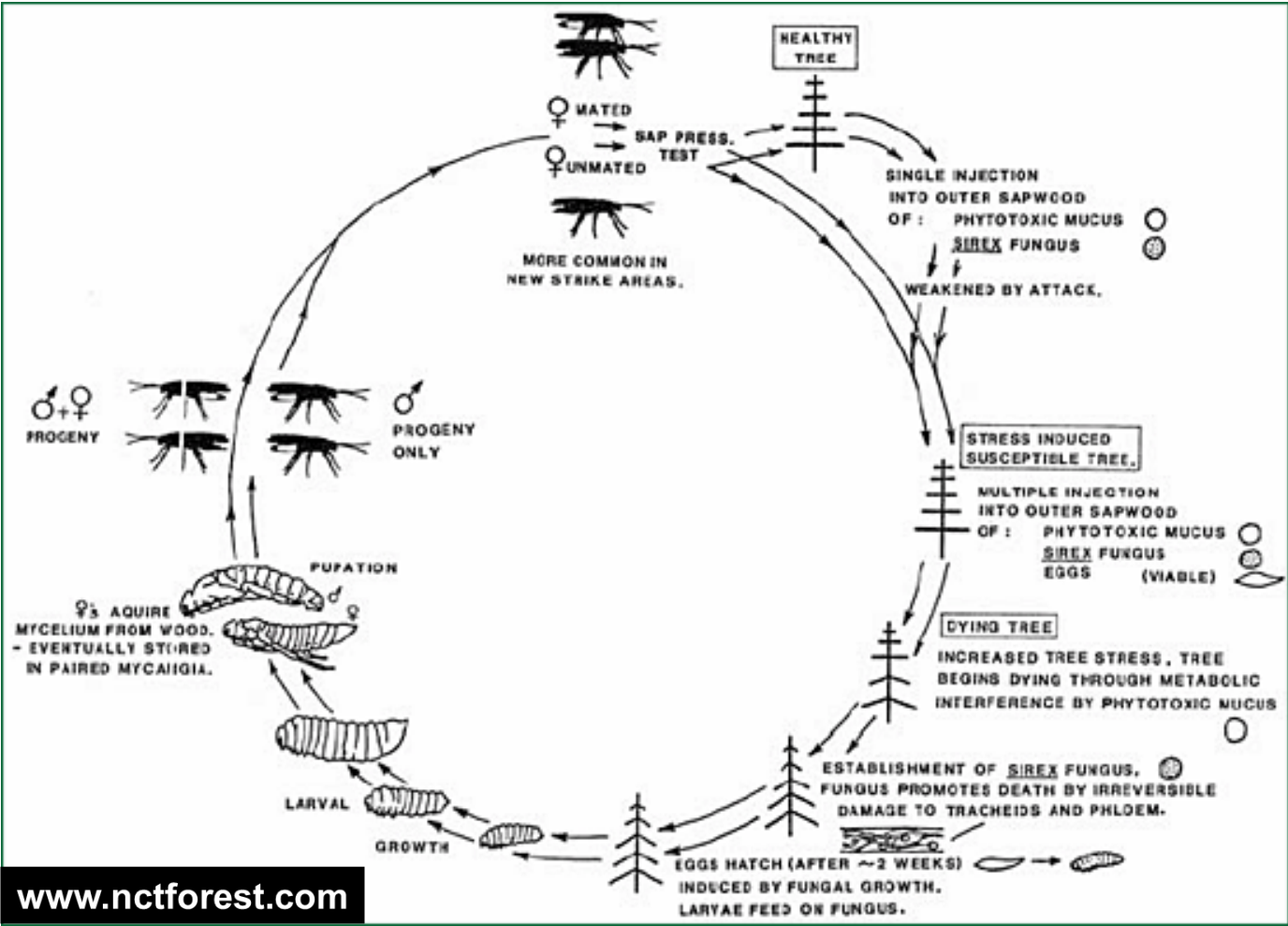
Siricid wood wasps



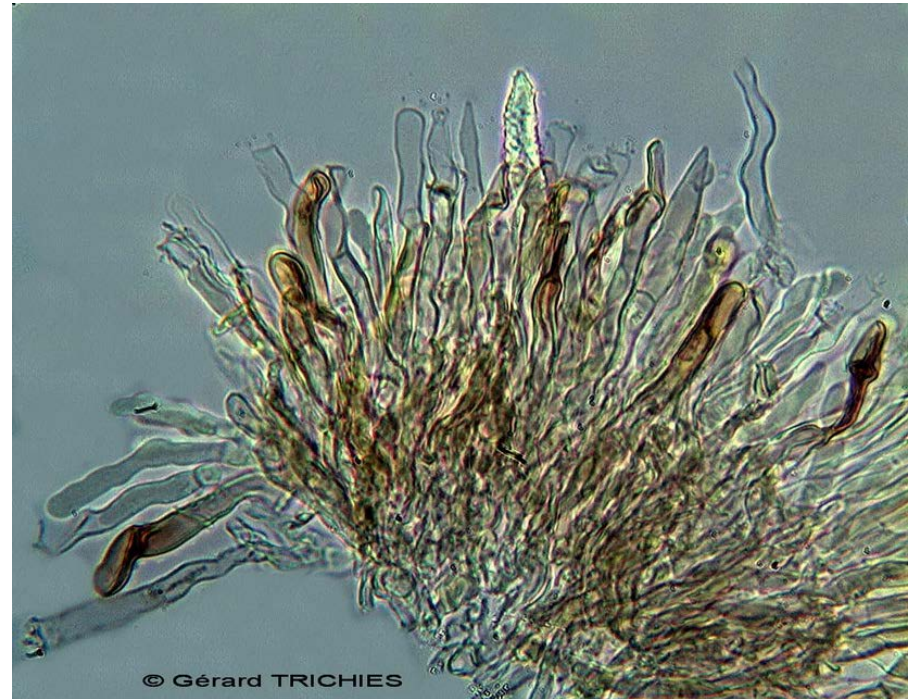
Sirex noctilio infestations



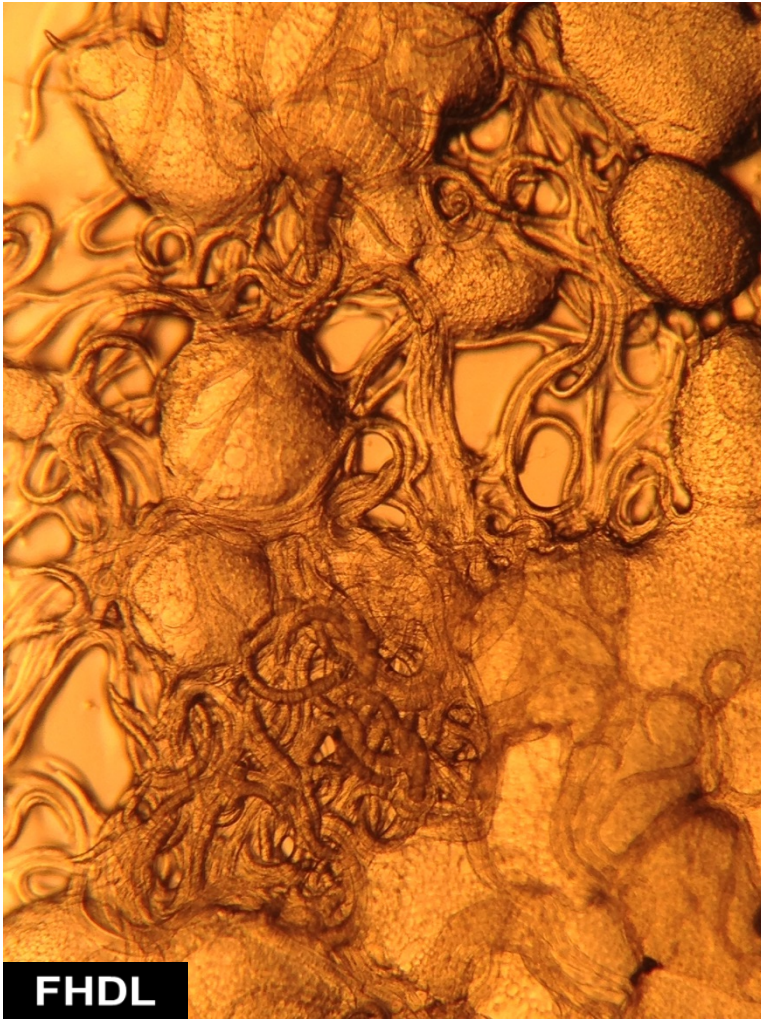
Sirex lifecycle



Amylostereum Associated Fungi



Deladenus siricidicola

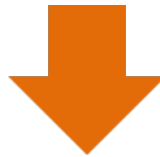


Objectives

To identify populations of wood wasps and their competitors in forests across Alabama



To use molecular techniques for species identification of wood wasps, fungi, and nematodes

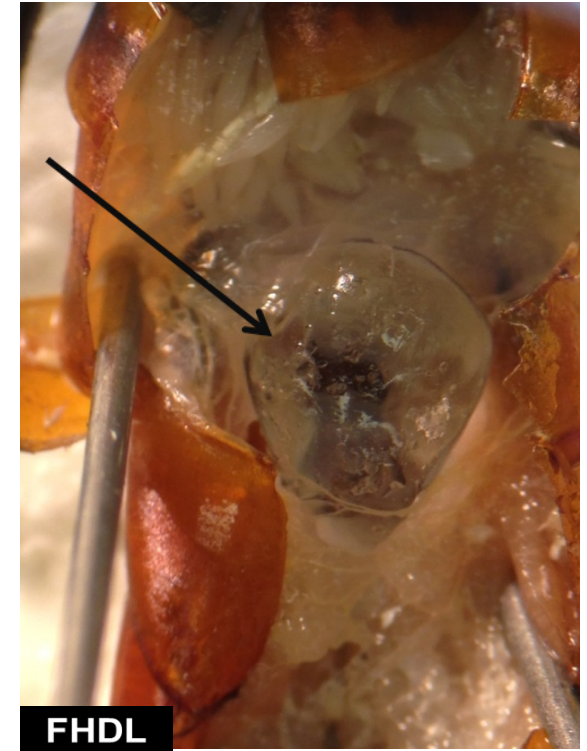
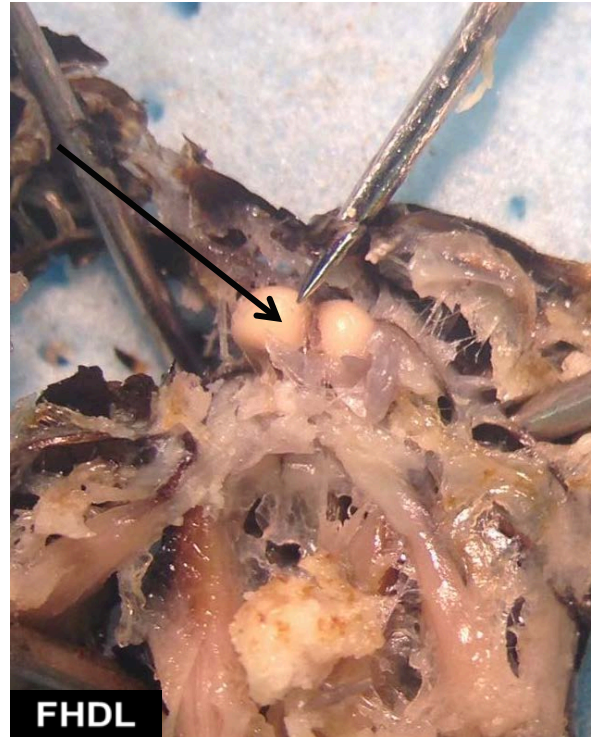


To determine which species of fungi and nematodes are associated with wood wasps in Alabama

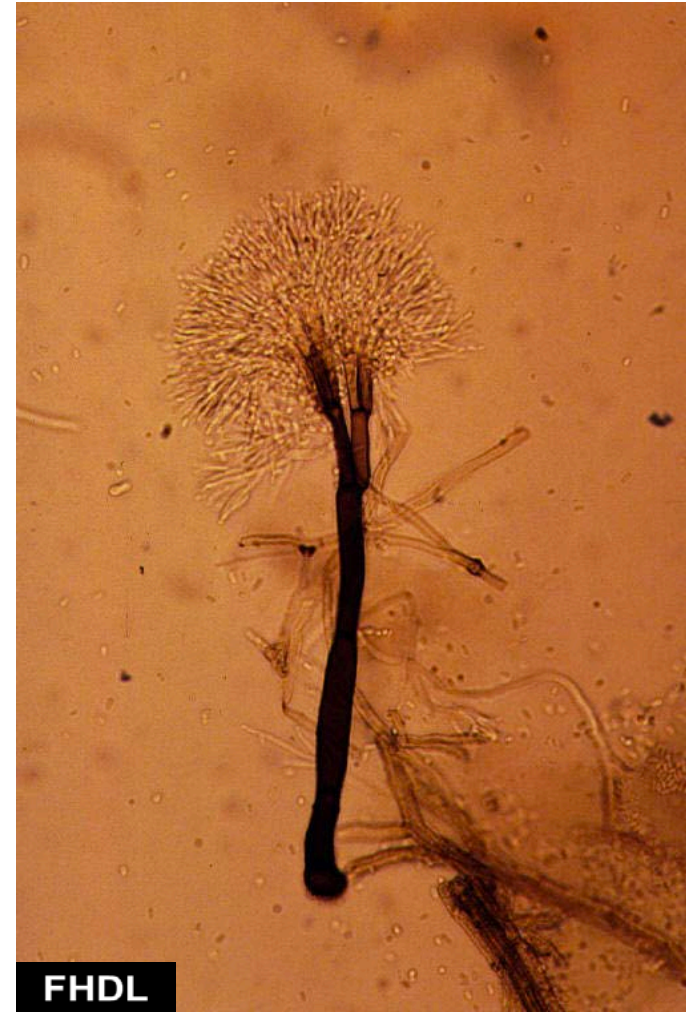
Trapping Survey



Siricid Dissection



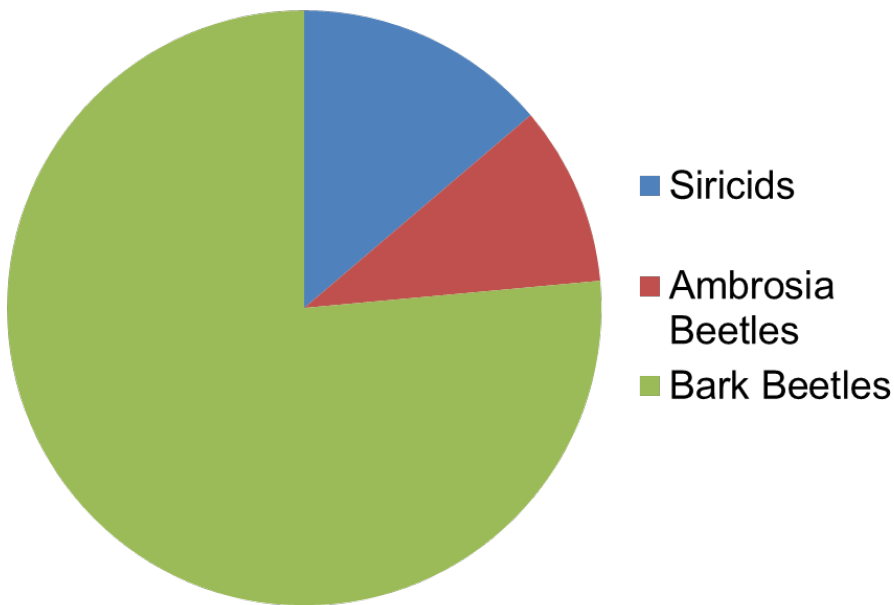
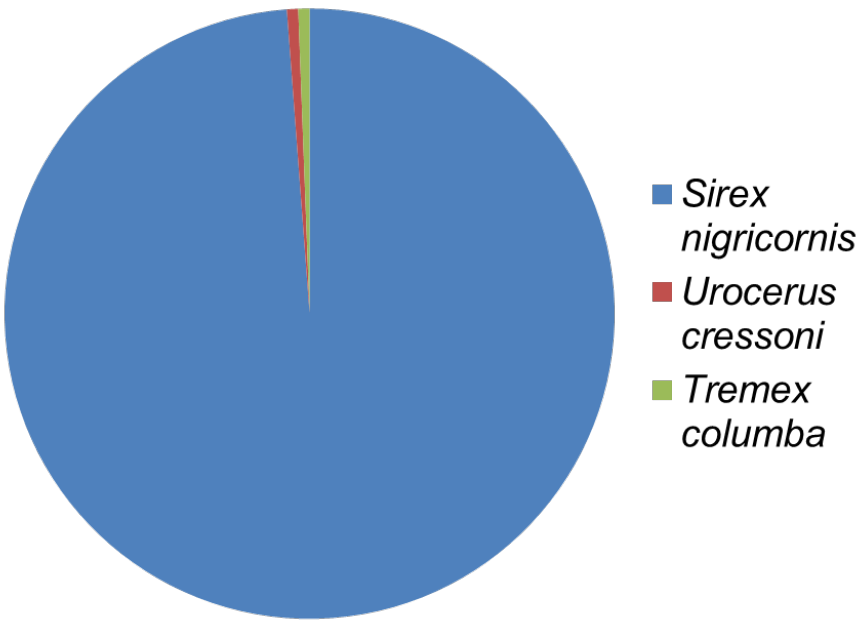
Native Competitors



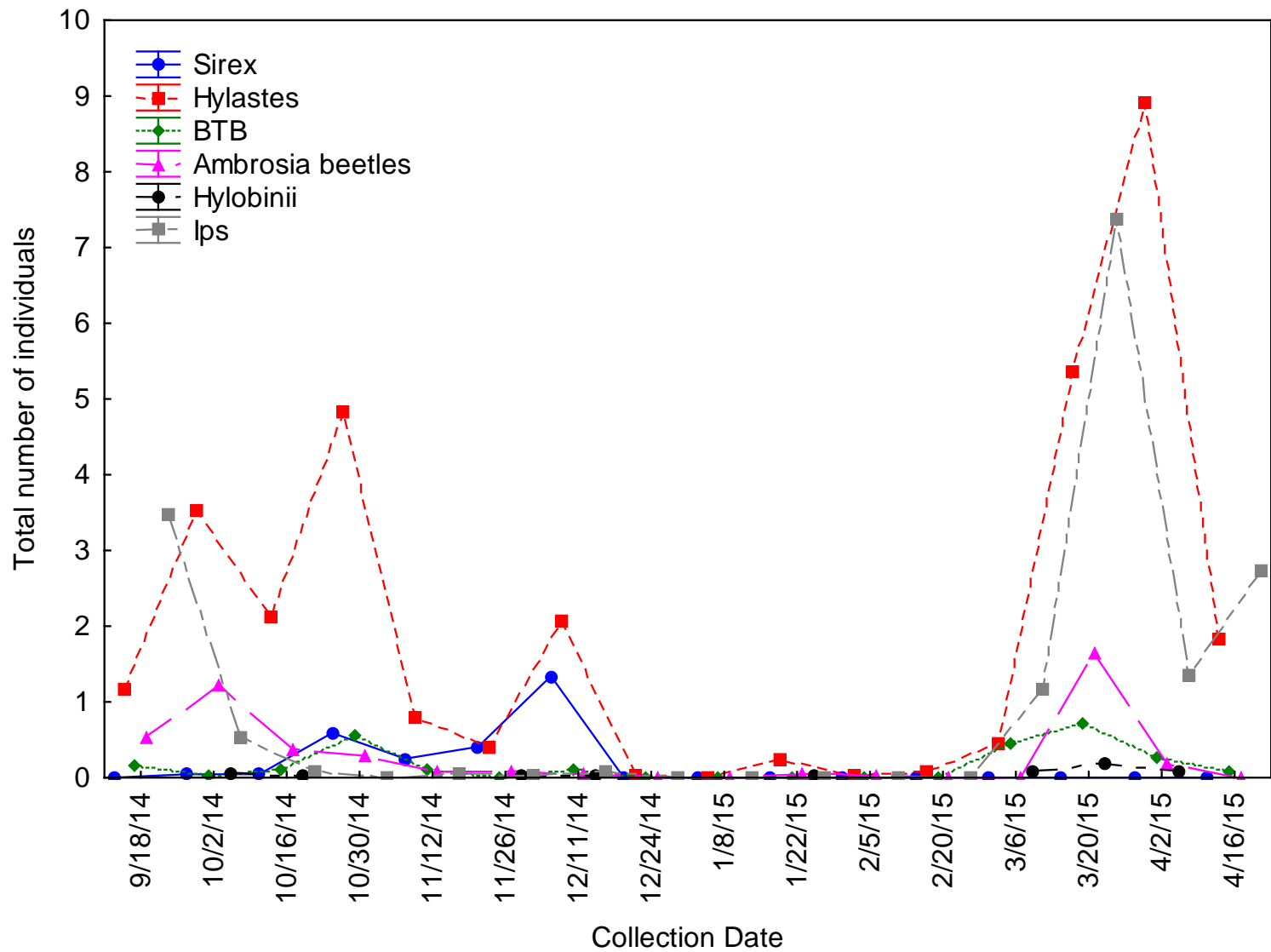
Preliminary Results

Total Captured Siricids 2014

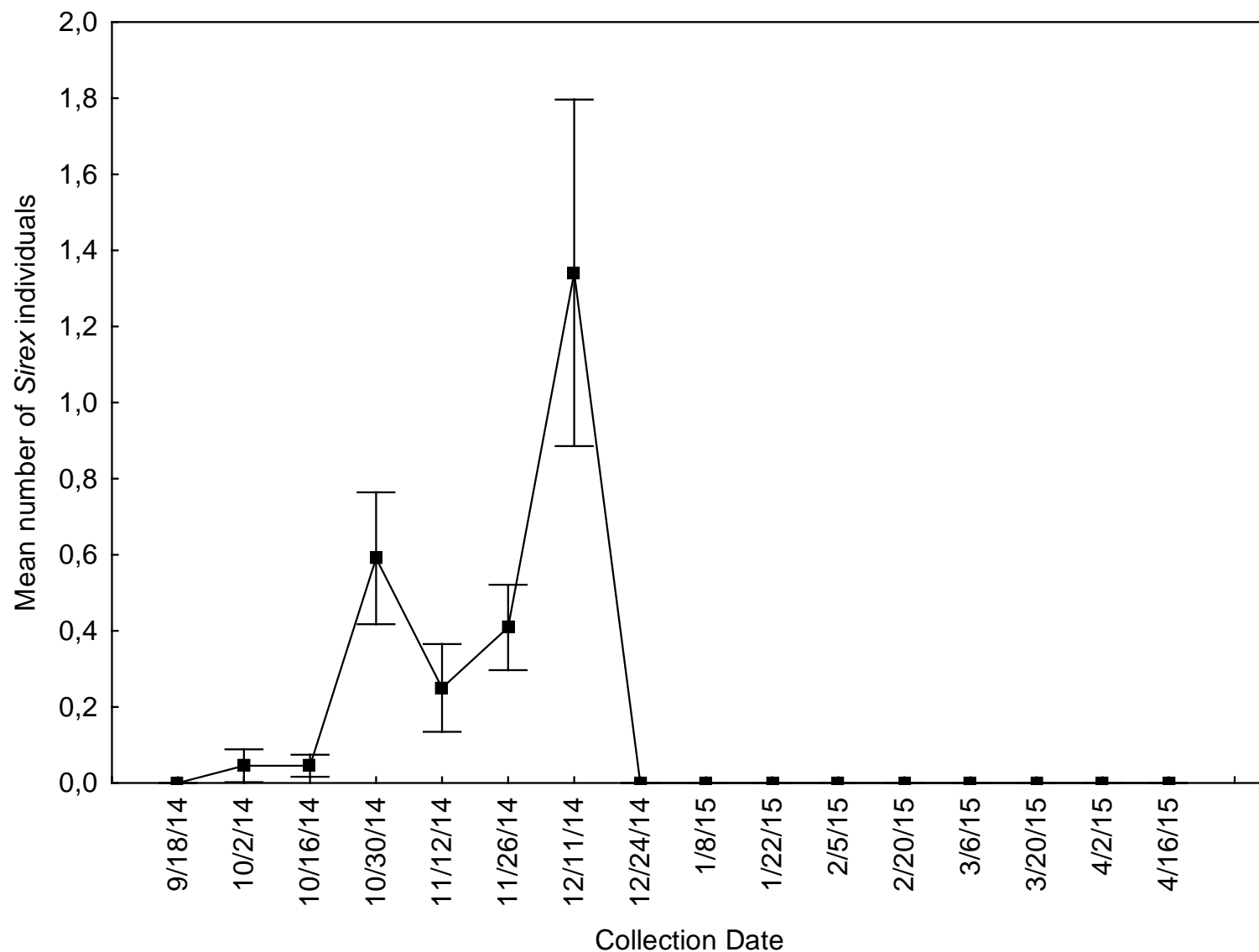
Total Captured Insects of Concern 2014



Preliminary Data for Tuskegee N.F.



Preliminary Data for Tuskegee N.F.



Questions?



UNIVERSITEIT VAN PRETORIA
UNIVERSITY OF PRETORIA
YUNIBESITHI YA PRETORIA

